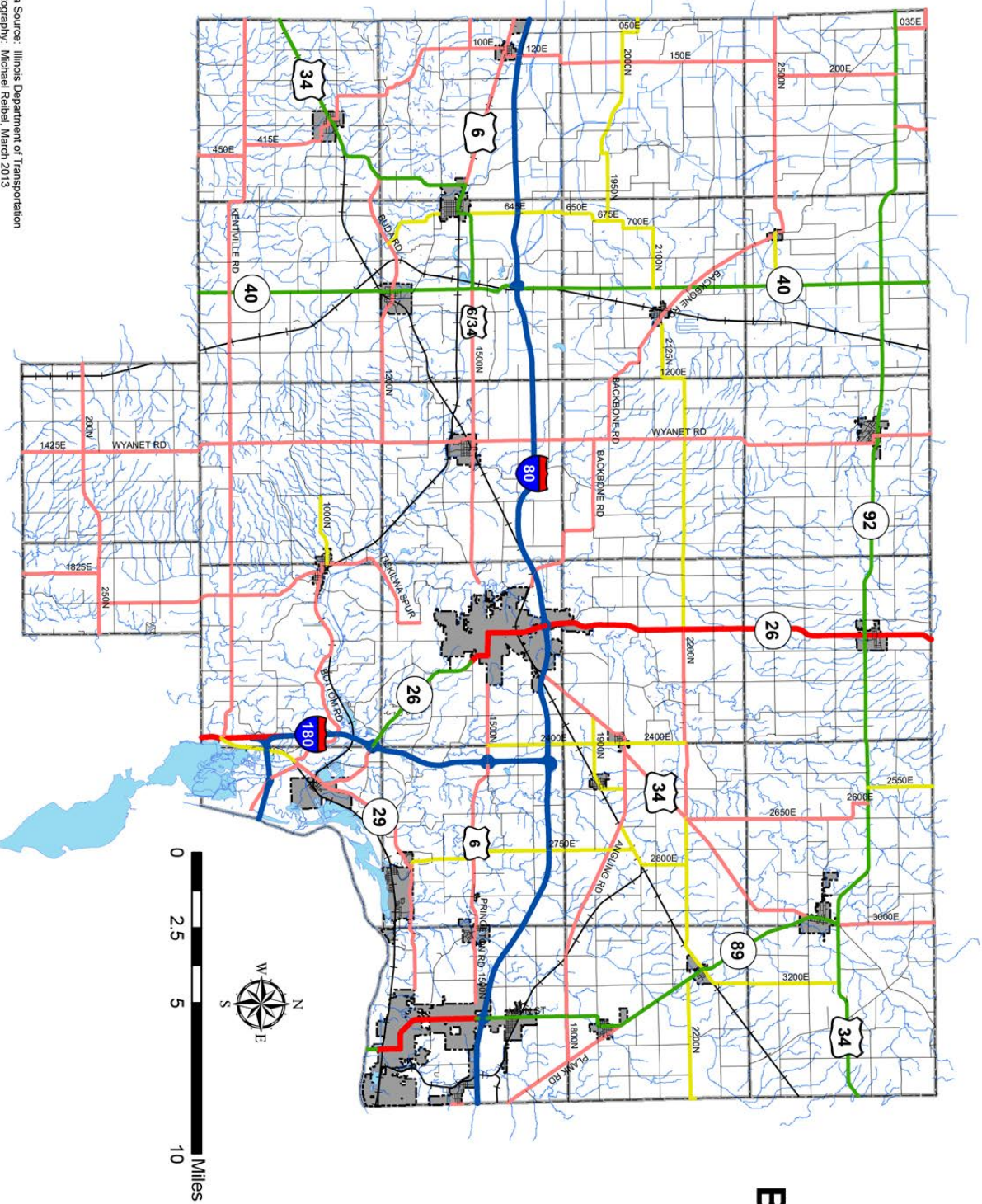
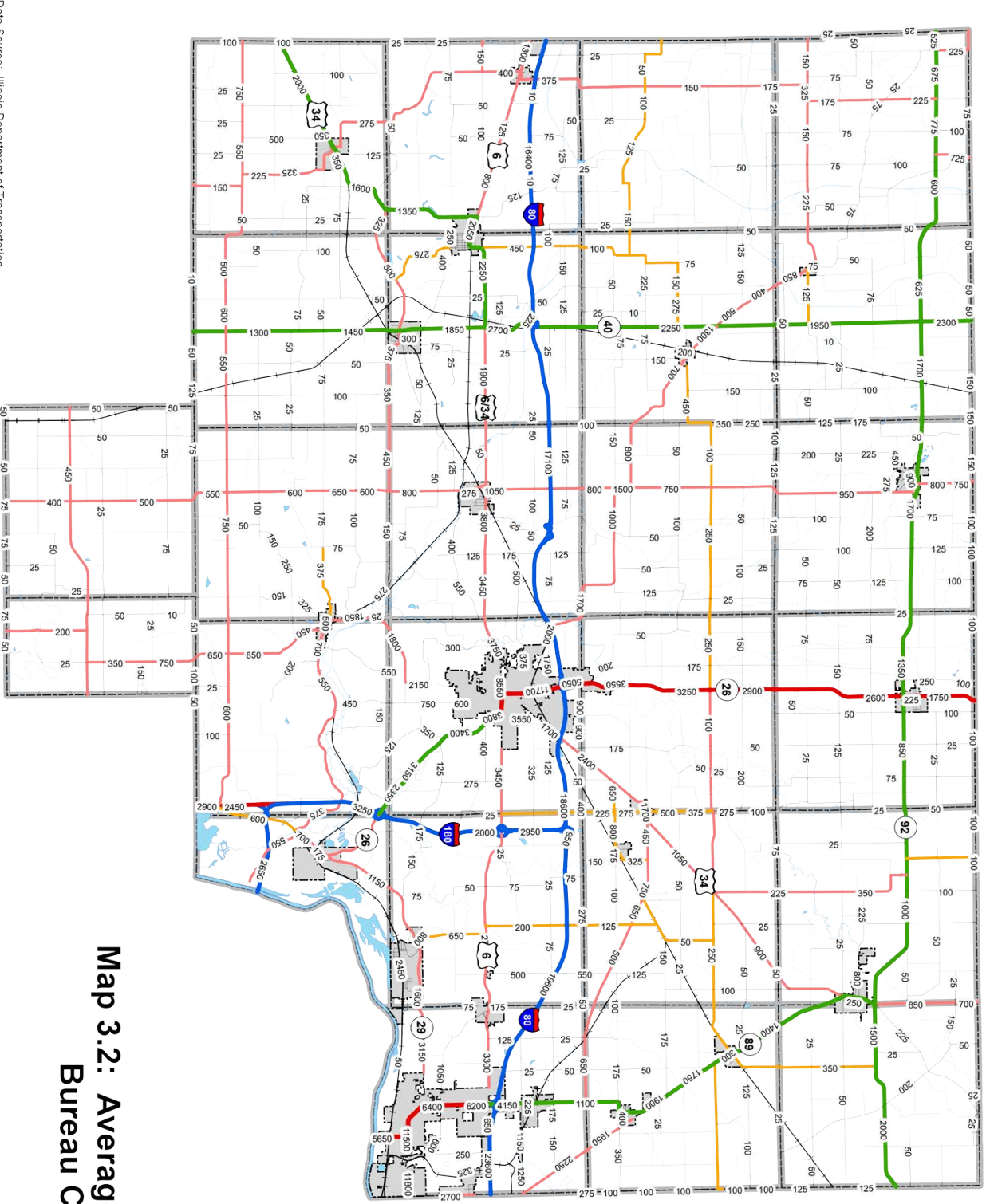


# Map 3.1: Functional Classification of Highways Bureau County, Illinois



Legend	
<b>Functional Class</b>	
	Interstate
	Other Principal Arterial
	Minor Arterial (Non-Urban)
	Major Collector (Non-Urban)
	Minor Collector (Non-Urban)
	Local Road or Street (Non-Urban)
	Rail Lines
	Water Bodies
	Streams
	Incorporated Cities/Villages
	Townships

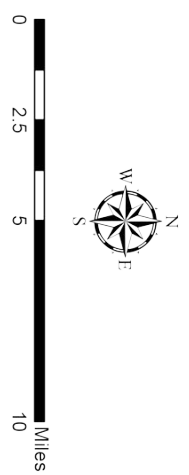
Data Source: Illinois Department of Transportation  
Cartography: Michael Reibel, March 2013



**Map 3.2: Average Annual Daily Traffic**  
**Bureau County, Illinois**

**Legend**

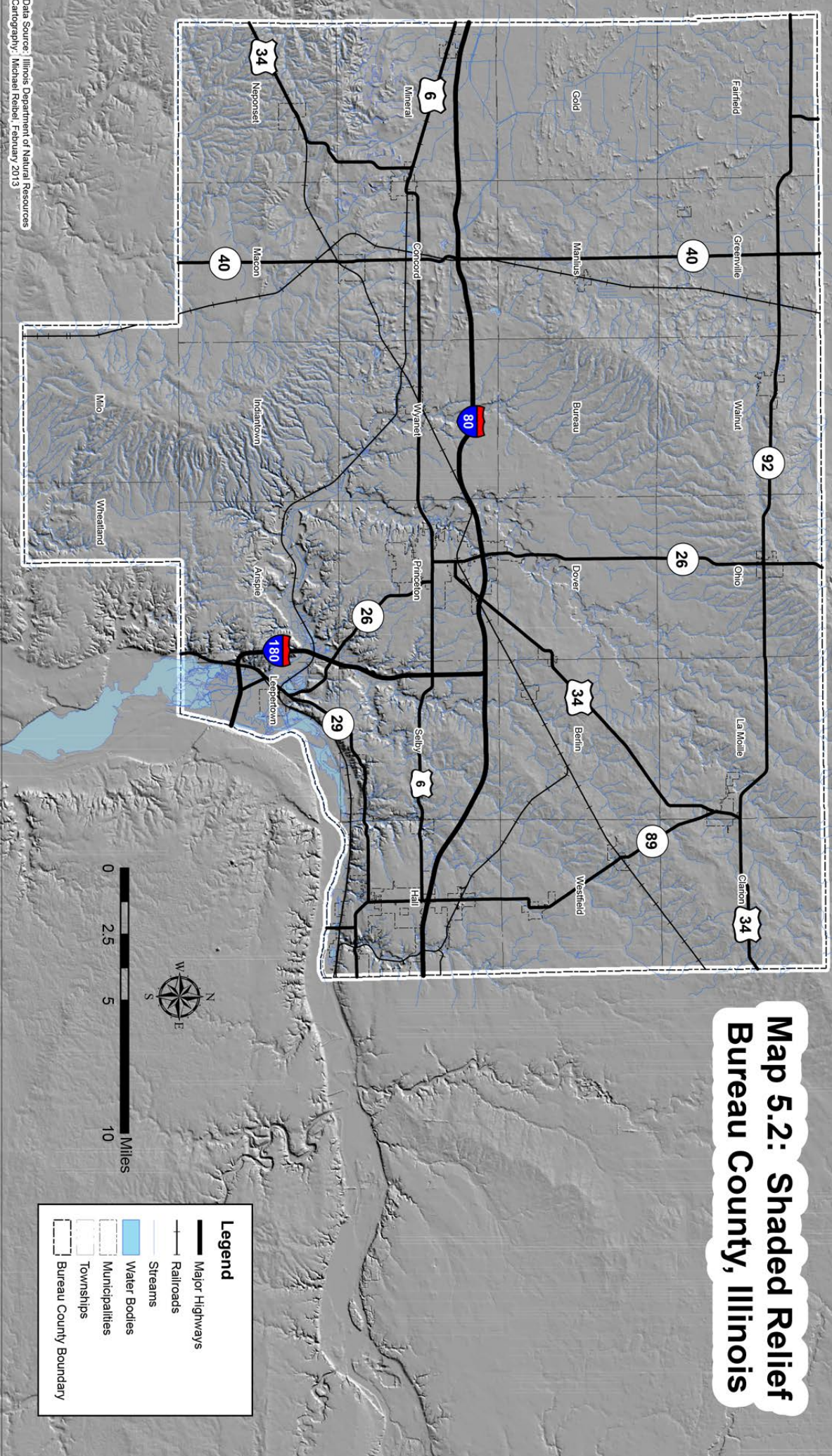
- Highways/Roads/Streets
- Interstate
- Principal Arterial
- Minor Arterial
- Major Collector
- Minor Collector
- Local Road or Street
- Rail Lines
- Municipalities
- Water Bodies
- Township Boundaries





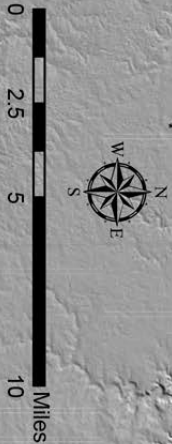


# Map 5.2: Shaded Relief Bureau County, Illinois



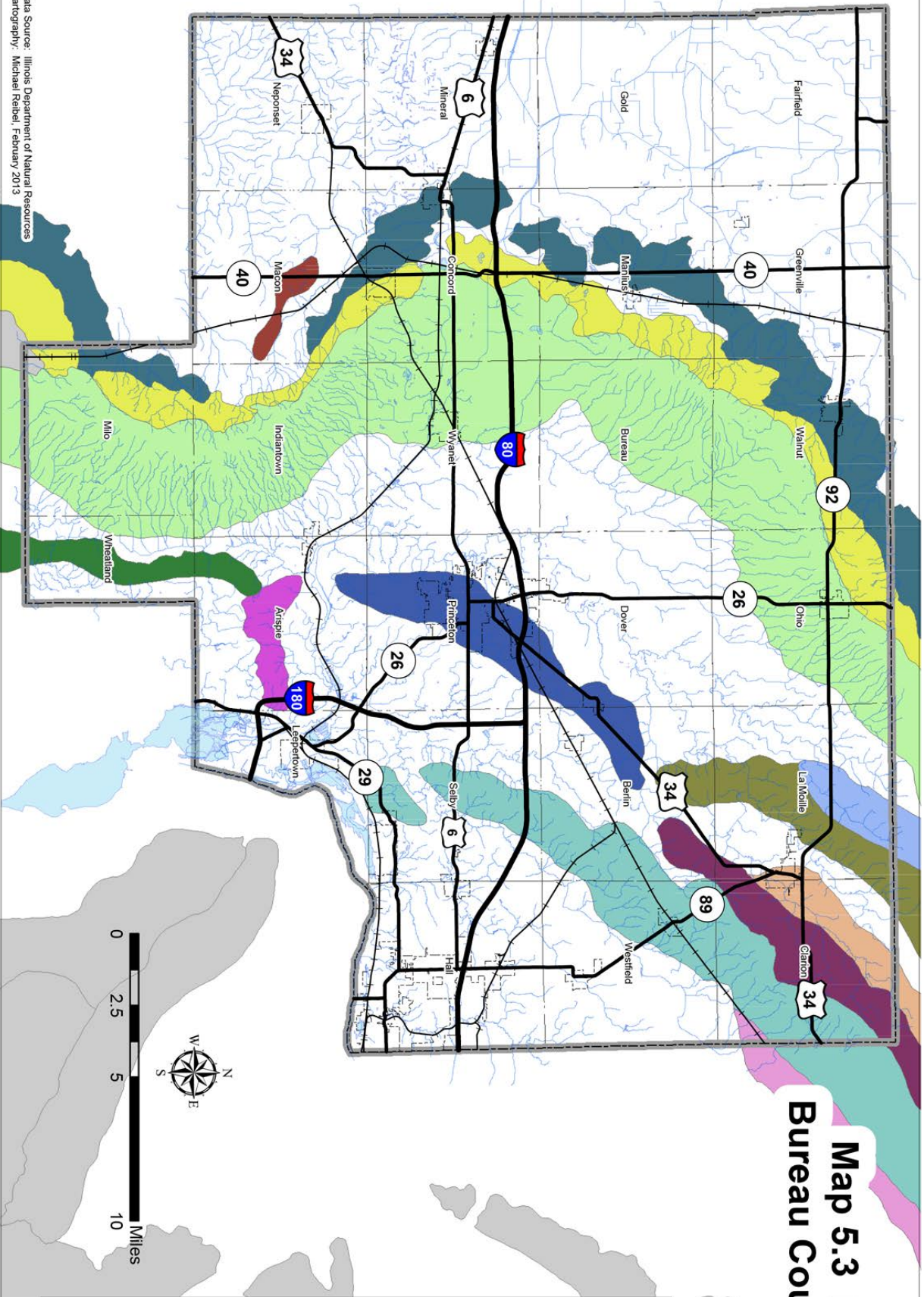
**Legend**

- Major Highways
- Railroads
- Streams
- Water Bodies
- Municipalities
- Townships
- Bureau County Boundary



Data Source: Illinois Department of Natural Resources  
Cartography: Michael Reibel, February 2013

# Map 5.3 Moraines Bureau County, Illinois



**Legend**

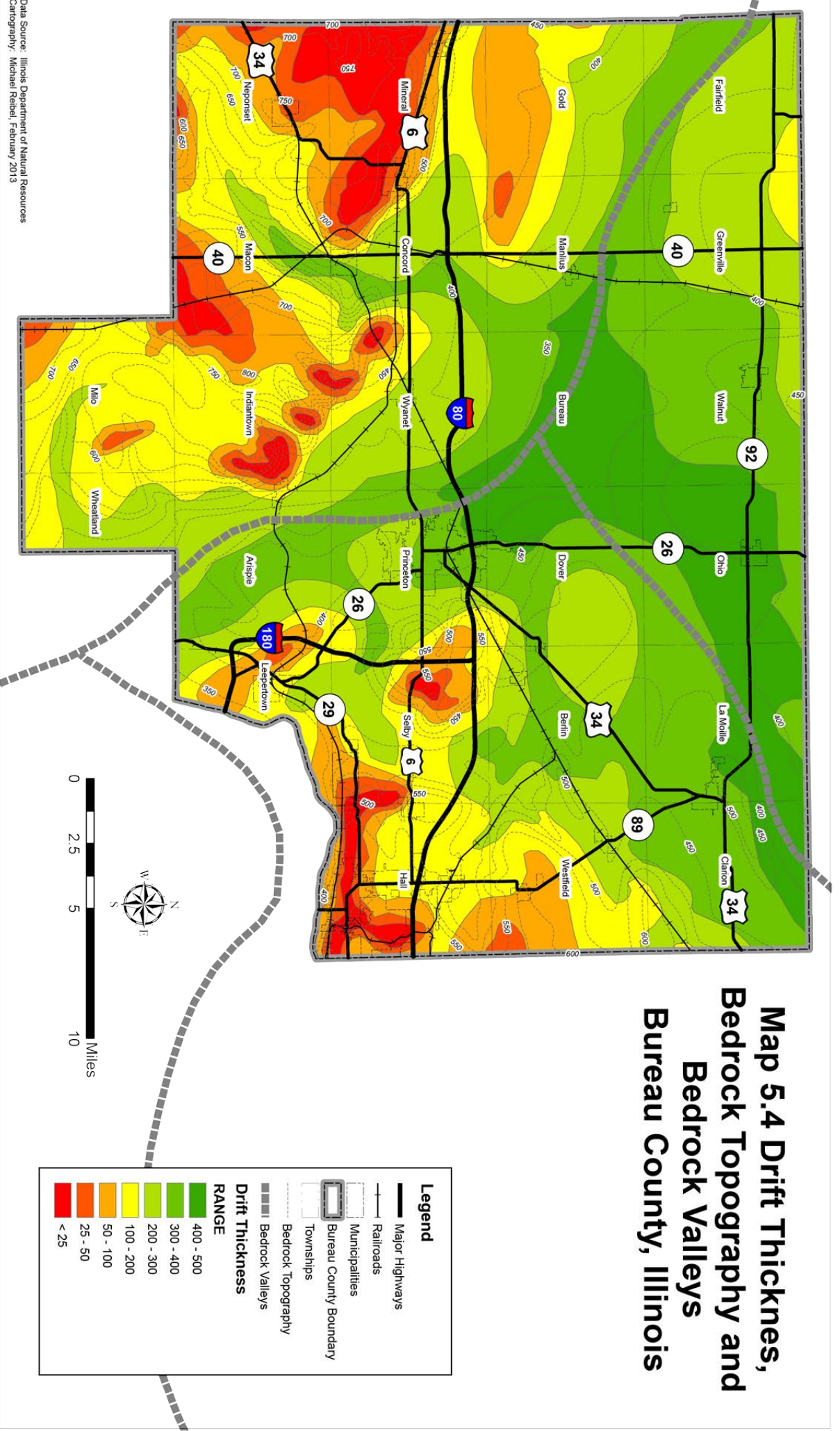
- Major Highways
- Railroads
- Streams
- Water Bodies
- Municipalities
- Bureau County Boundary
- Townships

**Moraines**

- Arlington
- Araspie
- Atkinson
- Buda
- Dover
- Eureka
- La Moille
- Mendota
- Park Ridge
- Paw Paw
- Providence
- Sheffield
- Theiss
- Van Orin
- Other Moraines

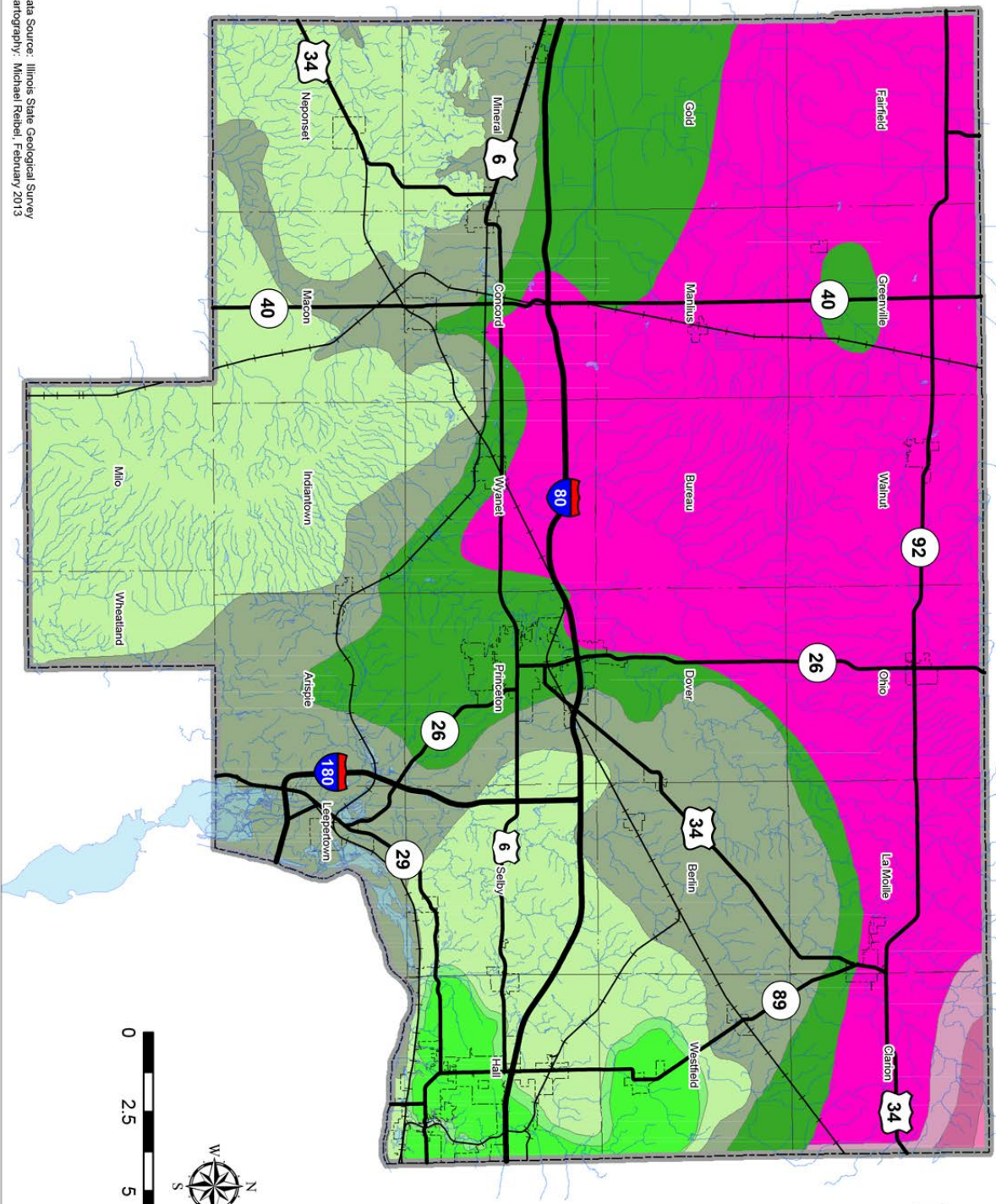
Data Source: Illinois Department of Natural Resources  
Cartography: Michael Reibel, February 2013

# Map 5.4 Drift Thickness, Bedrock Topography and Bedrock Valleys Bureau County, Illinois



Data Source: Illinois Department of Natural Resources  
Cartography: Michael Reibel, February 2013

# Map 5.5: Geologic Units Bureau County, Illinois

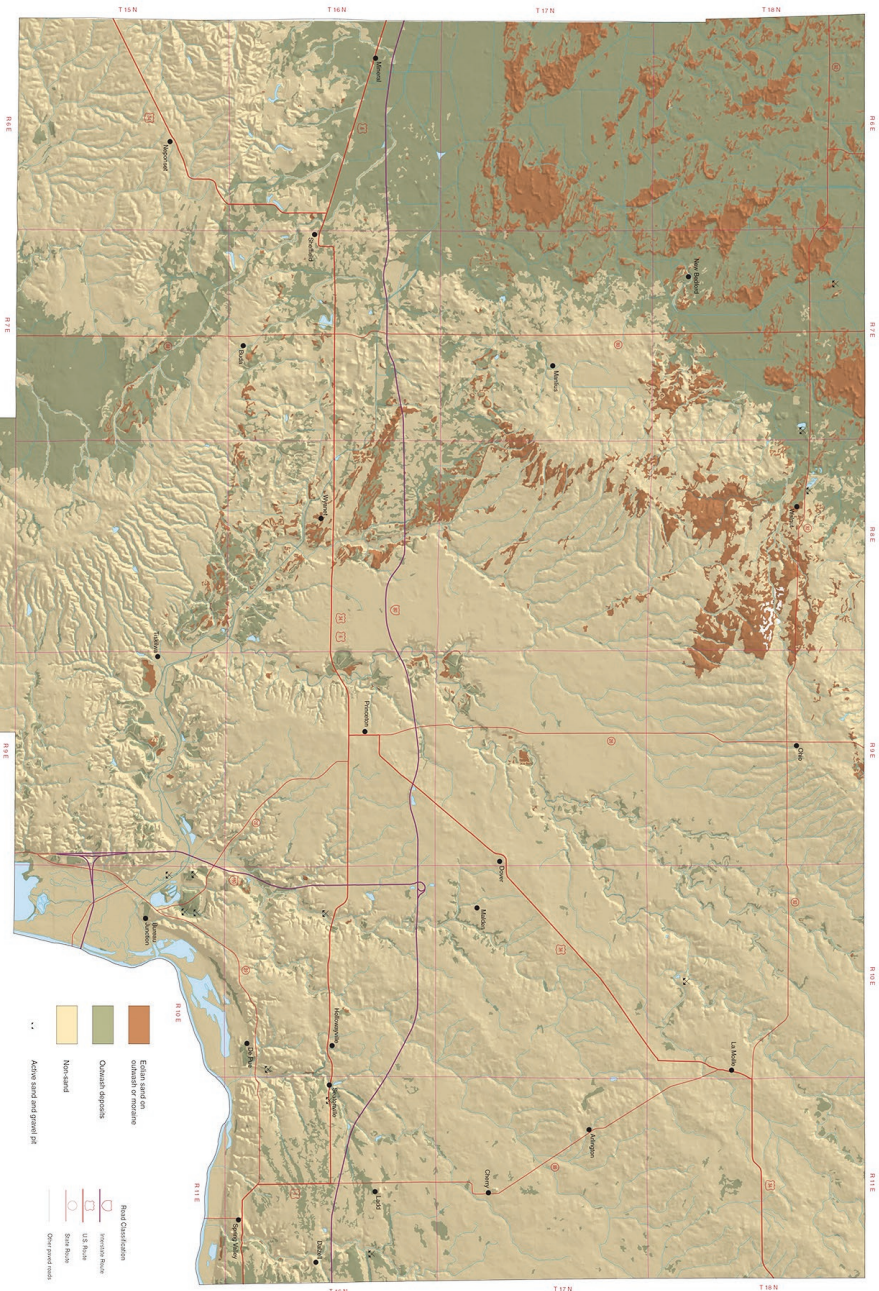


Legend	
	Major Highways
	Railroads
	Streams
	Water Bodies
	Municipalities
	Townships
	Bureau County Boundary
Geologic Units	
Ordovician System	
	Galena Group
	Platteville Group
	Maquoketa Shale Group
Silurian System	
	Silurian System
Pennsylvanian System	
	Bond Formation
	Carbondale Formation
	Mattoon Formation
	Shelburn-Patoka Formation
	Tradewater Formation

Data Source: Illinois State Geological Survey  
Cartography: Michael Reibel, February 2013



Map 5.6  
**DISTRIBUTION OF SURFICIAL EOLIAN AND  
 OUTWASH SAND DEPOSITS**  
 BUREAU COUNTY, ILLINOIS  
 Xianlongping Zhao  
 2009



Data were compiled by Zhao Xianlongping during June 1, 2008-2009 using Digital Data provided by the United States Geological Survey, Northern American Dataset of 1:50,000 Scale, Landform Classification, and Topographic Data.

Geology based on field work and data compilation by Xianlongping Zhao, 2009.

Digital cartography by Jane E. Johnson and Steve W. Babel, Illinois State Geological Survey.

This is the State Geological Survey of the University of Illinois under its general supervision and control. The responsibility of the data is that of the State Geological Survey. The accuracy of the data is not guaranteed. The type and accuracy of data available at each location, and the accuracy of the data, are not guaranteed. The accuracy of the data is not guaranteed. The accuracy of the data is not guaranteed.

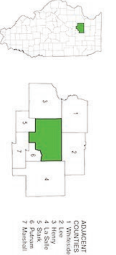
This map provides a general view of sand distribution. It does not replace the need for detailed investigation of specific sites.

**Recommended citation:**  
 Zhao Xianlongping, 2009. Distribution of surficial eolian and outwash sand deposits, Bureau County, Illinois. Illinois State Geological Survey, Illinois County Geology Map, ICGM Bureau County-SS, 1:50,000 scale.

© 2009 University of Illinois Board of Trustees. All rights reserved.  
 For permission information, contact the Illinois State Geological Survey.



1" = 10,000'



ILLINOIS  
 UNIVERSITY OF ILLINOIS BOARD OF TRUSTEES  
 For more information on the Illinois State Geological Survey, visit our website at <http://www.isgs.uiuc.edu>  
 217-244-2431  
 217-244-2431  
 217-244-2431

Sand and gravel deposits are widespread in northwestern Illinois and are important resources for the state. These deposits are largely composed of sand and gravel from the Illinoian and Kansan stages of the Pleistocene. The Illinoian stage is the most recent and is the most important. The Illinoian stage is the most recent and is the most important. The Illinoian stage is the most recent and is the most important.

**Abstract**  
 Sand and gravel deposits are widespread in northwestern Illinois and are important resources for the state. These deposits are largely composed of sand and gravel from the Illinoian and Kansan stages of the Pleistocene. The Illinoian stage is the most recent and is the most important. The Illinoian stage is the most recent and is the most important.

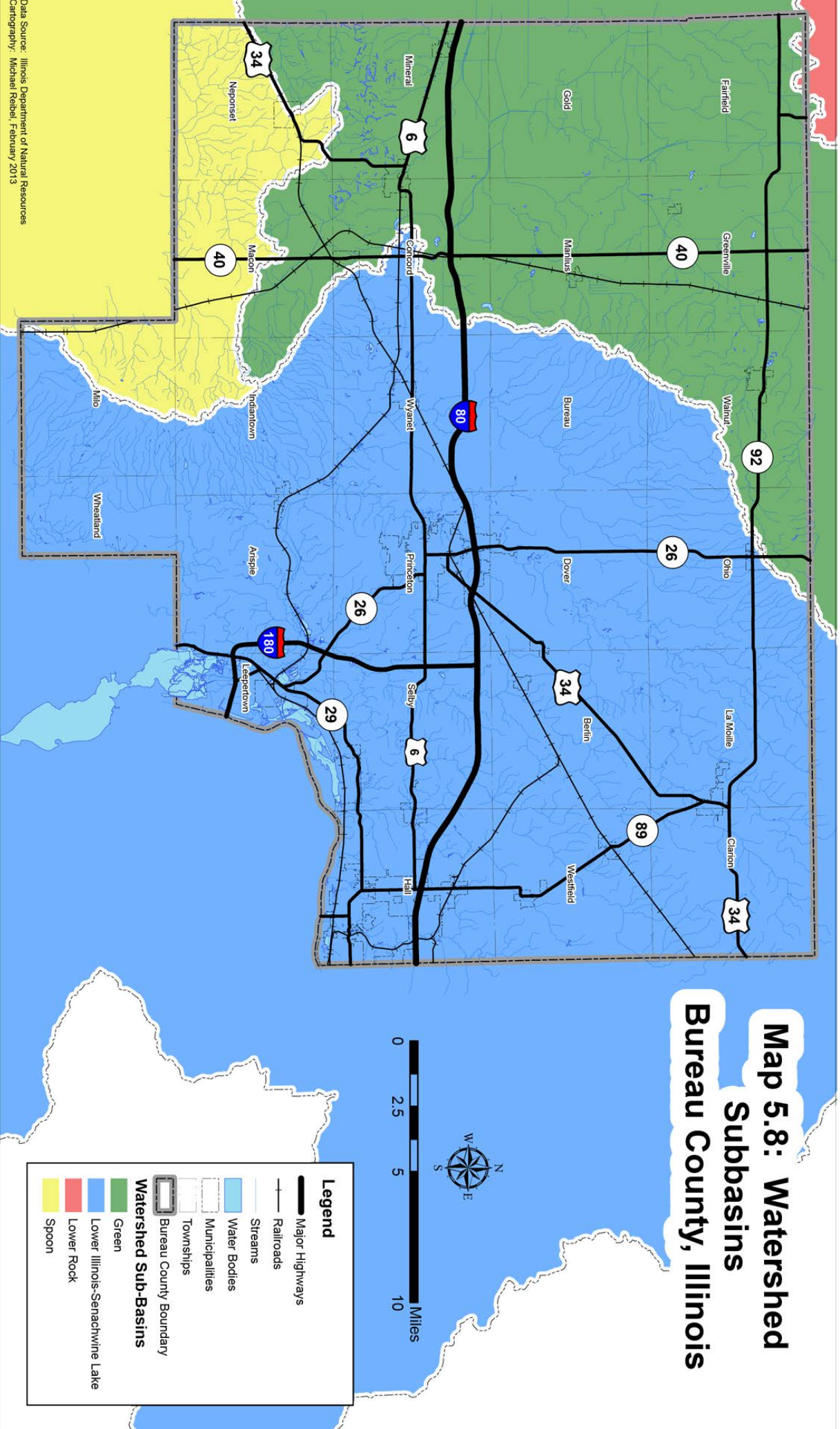
**Introduction**  
 Sand and gravel deposits are widespread in northwestern Illinois and are important resources for the state. These deposits are largely composed of sand and gravel from the Illinoian and Kansan stages of the Pleistocene. The Illinoian stage is the most recent and is the most important. The Illinoian stage is the most recent and is the most important.

**Conclusions**  
 Sand and gravel deposits are widespread in northwestern Illinois and are important resources for the state. These deposits are largely composed of sand and gravel from the Illinoian and Kansan stages of the Pleistocene. The Illinoian stage is the most recent and is the most important. The Illinoian stage is the most recent and is the most important.

**References**  
 Johnson, J. A., 1974. Quaternary deposits of Illinois. Illinois State Geological Survey, Bulletin 200, 100 p.

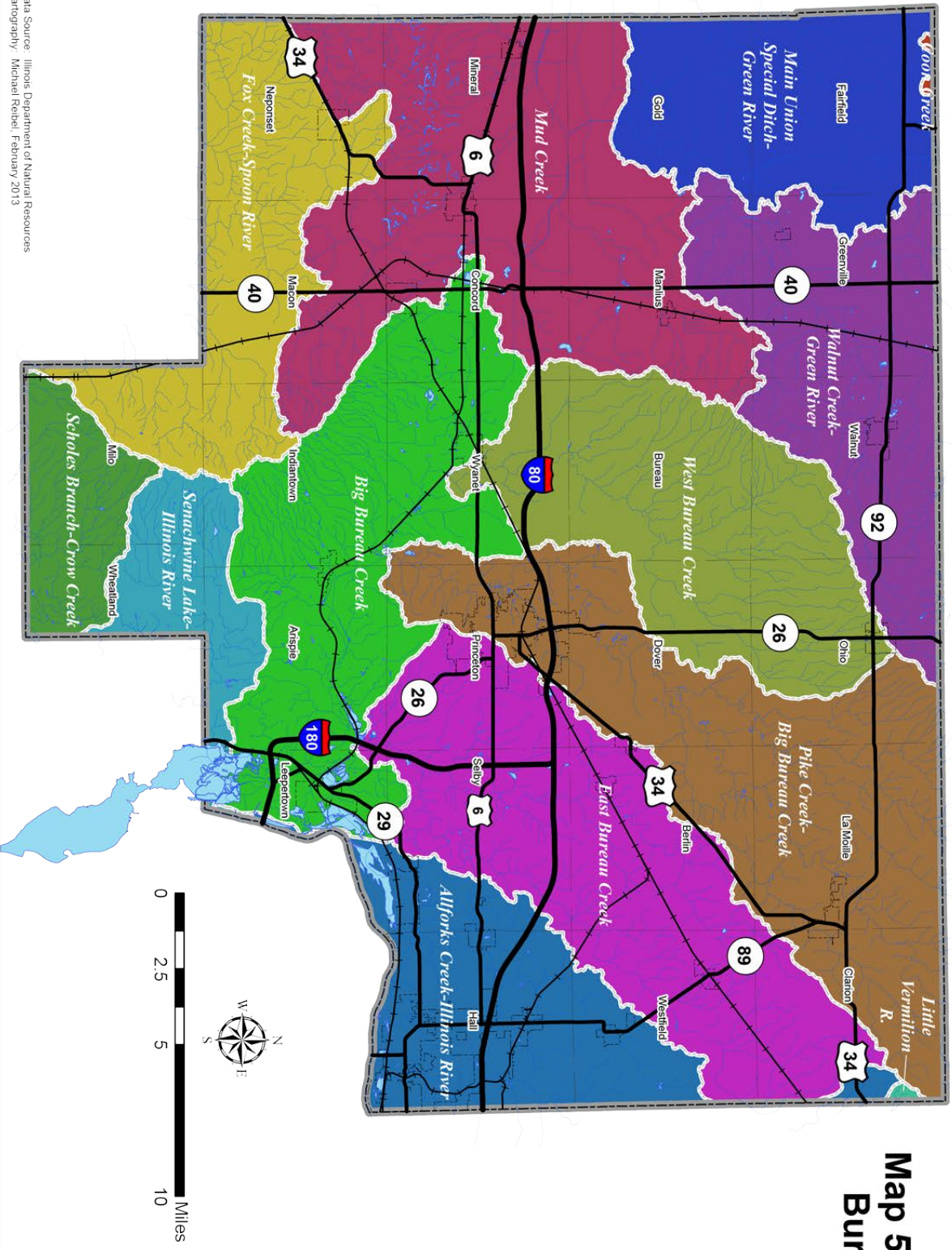


# Map 5.8: Watershed Subbasins Bureau County, Illinois



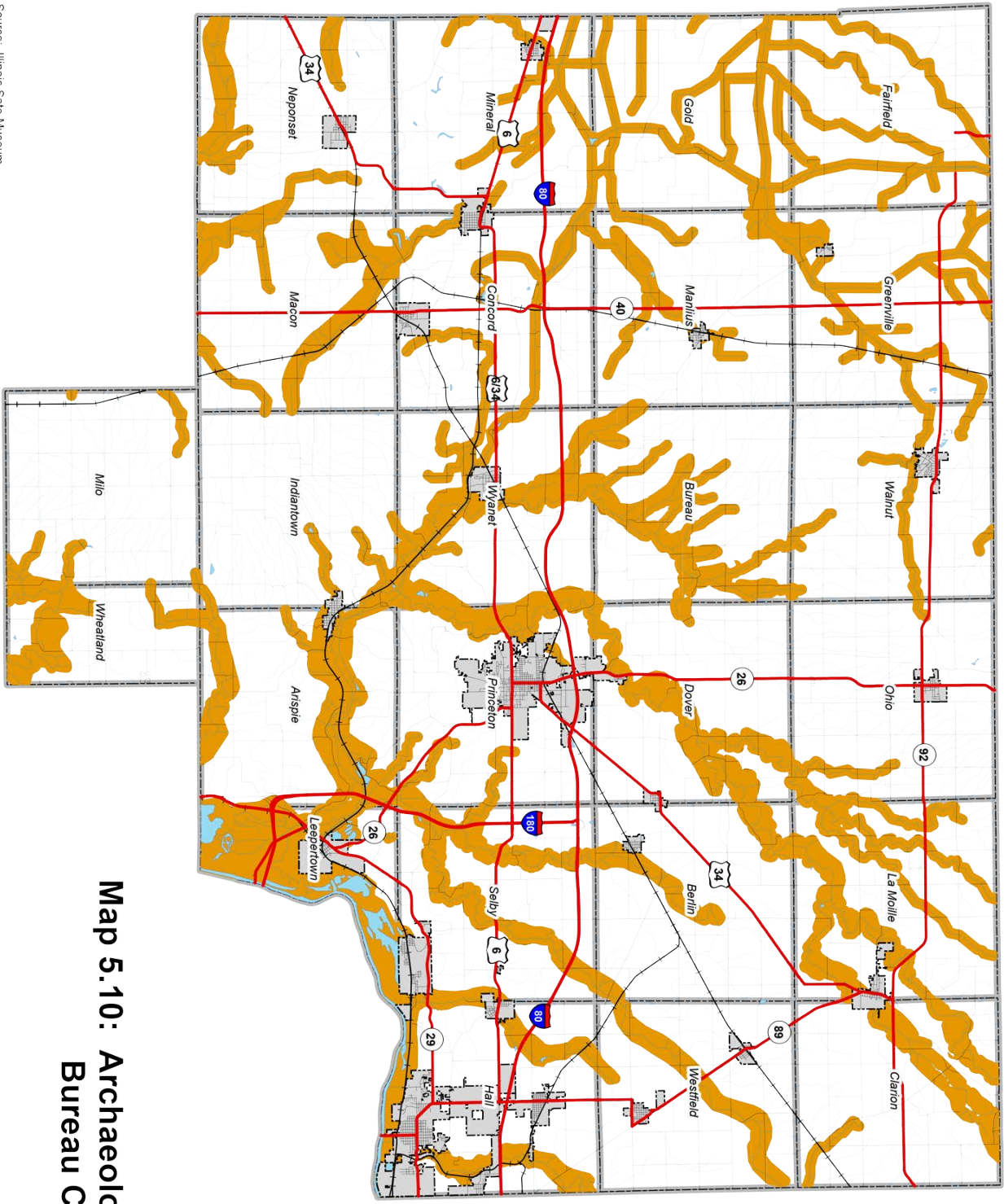
Data Source: Illinois Department of Natural Resources  
Cartography: Michael Reibel, February 2013

# Map 5.9: Local Watersheds Bureau County, Illinois



Legend	
	Major Highways
	Rail Lines
	Streams
	Water Bodies
	Municipalities
	Townships
	Bureau County Boundary
Local Watersheds	
	Allforks Creek-Illinois River
	Big Bureau Creek
	East Bureau Creek
	Fox Creek-Spoon River
	Little Vermillion River
	Main Union Special Ditch-Green River
	Mud Creek
	Pike Creek-Big Bureau Creek
	Senachwine Lake-Illinois River
	Walnut Creek-Green River
	West Bureau Creek

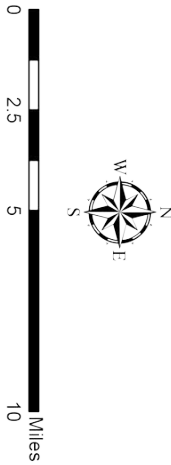
Data Source: Illinois Department of Natural Resources  
Cartography: Michael Reibel, February 2013



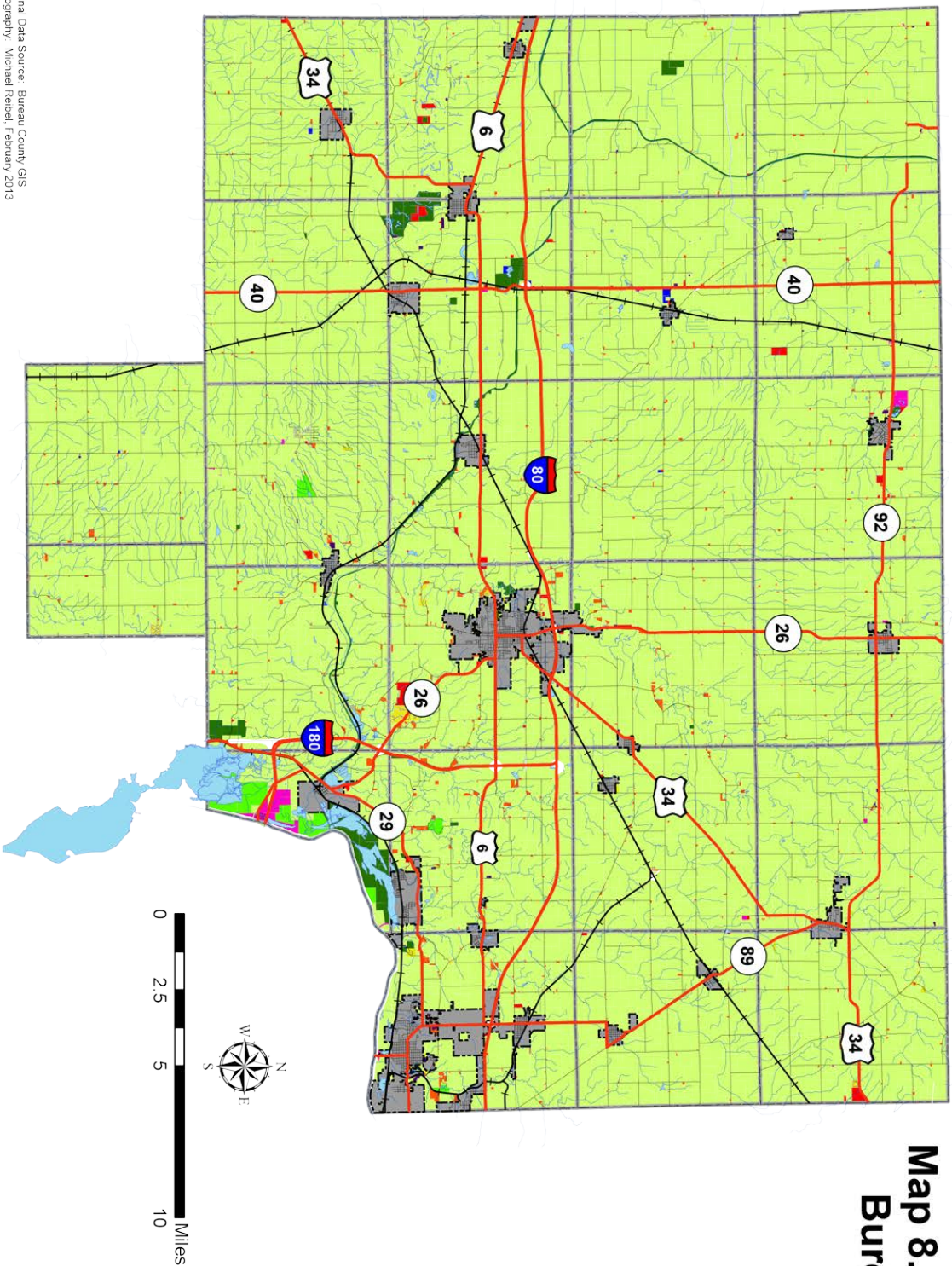
**Map 5.10: Archaeological Resource Potential  
Bureau County, Illinois**

**Legend**

- Major Highways
- Other Roads/Streets
- Rail Lines
- Municipalities
- Water Bodies
- Rivers/Streams
- High Archaeological Resource Potential
- Township Boundaries

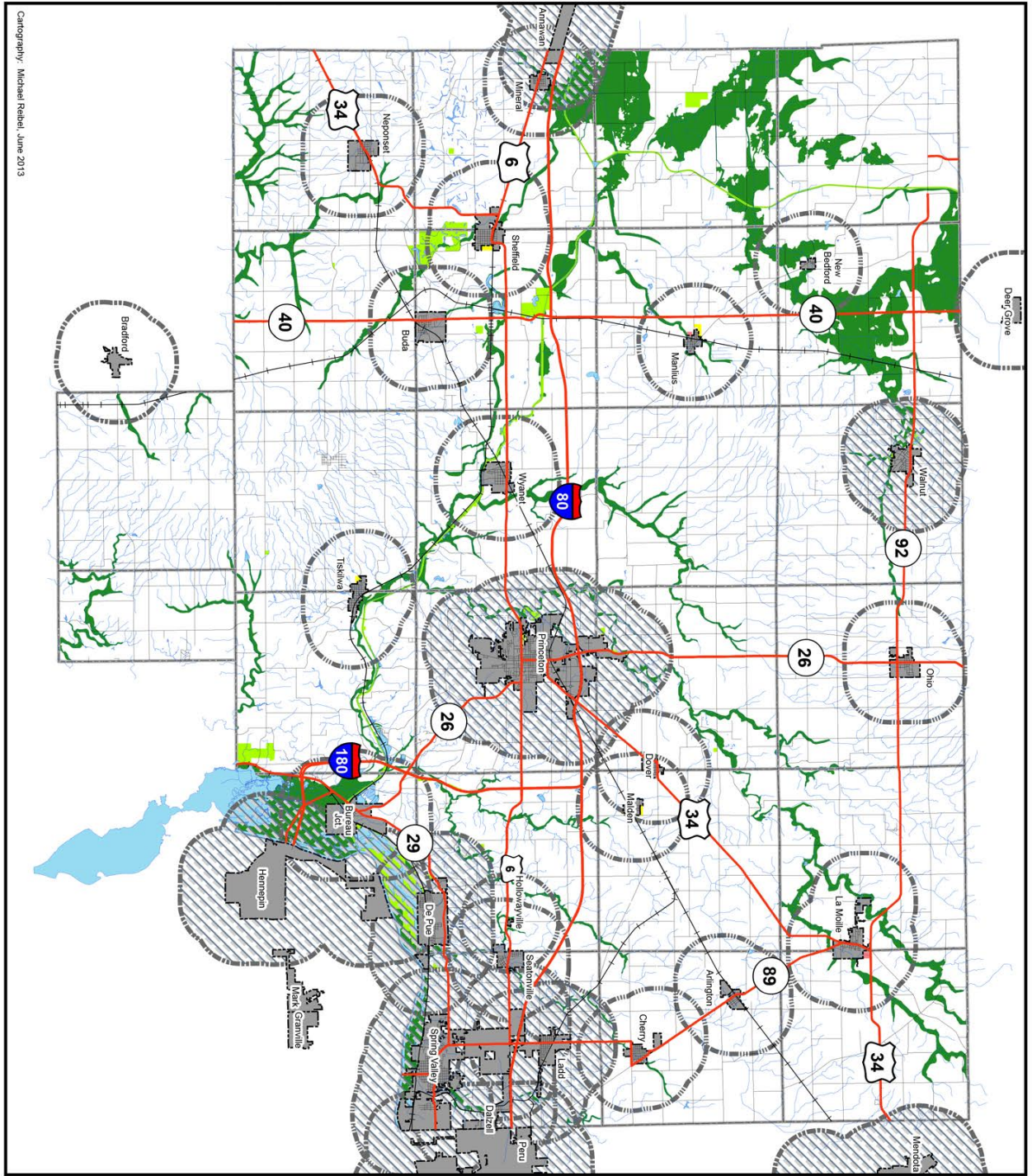


# Map 8.1: Existing Land Use Bureau County, Illinois



Legend	
	U.S. and State Highways
	Rail Lines
	Other Roads
	Water Bodies
	Streams
	Incorporated Cities/Villages
	Townships
Land Use	
	Agriculture and Rural Lands
	Rural Residential
	Residential
	Commercial
	Industrial
	Public/Governmental
	Church/Cemetary
	Private Camps/Recreational Areas
	Public Parks/Open Space

# Map 8.2 General Development Plan Bureau County, Illinois



**Legend**

- U.S. and State Highways
- Other Roads
- Railroads
- Streams
- Incorporated Cities/Villages
- 1.5 Mile Municipal Planning Radius
- Water Bodies
- Township Boundary
- Public Parks and Other Open Space

**General Development Plan**

- Conservation / Open Space
- Residential
- Commercial
- Area Covered by Municipal Comprehensive Plan: Refer to applicable municipality's comprehensive plan or other planning document(s) for guidance in these areas.

**NOTE:** All unmarked lands outside urban and suburban areas are planned for continued agricultural and agriculturally-related uses. Only limited residential uses should be permitted.

